

sentry glass product summary



Features:

Full aluminium framework.
Factory prefabricated access panel system.
Up to 3000mm high.
Can be supplied in low height version, with a lid.
22mm finished thickness panels.
Available for toilet pans, urinals, wash-hand basins or simply wall panelling.
Hinged access doors fastened by concealed catches.
Number and heights of horizontal splits can vary.
Glass can be painted to any RAL colour.
Core sourced from legal and sustainable sources.
Can be supplied to meet NAUF criteria.
10 year guarantee.



thrislington cubicles

t +44 1244 520 677
e info@thrislingtoncubicles.com
www.thrislingtoncubicles.com

Also available in:

- Wood Veneer
- Stainless Steel
- Aluminium
- CGL
- HPL



K32 Specification: Sentry Glass Access Module

Specification: Fully pre-fabricated unique hinged access panel module up to 3000mm high, manufactured in UK using Aluminium Alloy 6063T6. Overall depth from the rear of the framework to front face of panel is 87mm. The system offers corrosion resistance to moisture, but is not designed to prevent water penetration. In a shower situation, we would recommend the use of our hung panel system with compact grade laminate panels.

Application: The system is suitable for use inside toilet cubicles with a WC toilet pan, to house urinals or wash hand basins, or as wall lining. It can be used to a back wall or in a back to back layout. Although the system will provide some acoustic dampening, it is not designed for that purpose and in a back to back configuration, we would recommend that an acoustic wall is inserted between the two sets of modules. Where a wall-hung WC toilet pan is used, the pan needs to have its own weight-bearing support, supplied by others.

Framework: Full aluminium frame using Aluminium Alloy 6063T6, factory assembled using extruded vertical posts and horizontal cross rails, manufactured to bespoke width and height and supported by 12mm diameter zinc-plated mild steel adjustable feet. Frame locates into floor and ceiling channel and is braced to the back wall with aluminium angle, to a specified distance (standard is 300mm to the face of the panels). This framework fully supports the module and no other framework needs to be in place to enable the fitting of the system

Access Panels: 22mm finished thickness consisting of 15mm moisture resistant chipboard/MDF core, sourced from sustainable forests, finished on both faces with matching high pressure laminate, then edged with matching PVC/ABS tape, to accept a 5mm back painted toughened glass panel to front face. The standard configuration allows for 3 no panels per module, although this can be varied to suit a particular application. The size and positioning of all cut-outs for the sanitary ware and any other accessories, need to be confirmed by others, prior to the fabrication of the glass panels.

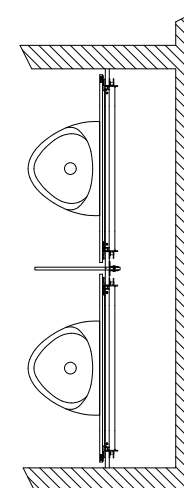
Infill Panels: The infills form an integral part of the framework, consisting of vertical infills, a head infill and skirting, creating required shadow gaps/clearances to the vertical edge of the panels and at the floor and ceiling. 17mm finished thickness consisting of 15mm moisture resistant MDF core, sourced from sustainable forests, faced with high pressure laminate with balancing backing laminate. Alternatively, WBP plywood can be supplied as skirting to accept finishes by others, such as tiling/vinyl. When fitted prior to the finished ceiling, the head infill can sit above the level of the ceiling, with the ceiling then subsequently fitted to the face of the head infill. Alternatively, if the ceiling is fitted first, then the head infill can be scribed to the underside of the ceiling.
The system has standard shadow gaps of 16mm to the centre and 25mm to side walls. These can be reduced, to suit a particular requirement, by using alternative hardware.

Fittings: Access panels site fitted to framework, using adjustable zinc alloy die cast hinges and fastened using zinc alloy die cast locating catches. Panel accessed using supplied injection moulded key.

Finishes:

Panels: 5mm low-iron toughened glass, back painted colours from our standard range. Option of low-iron or clear glass.

Infills: 0.8mm high pressure laminate from our standard ranges, which include various leading manufacturers.



sentry veneer product summary



Features:

Full aluminium framework.
Factory prefabricated access panel system.
Up to 3000mm high.
Can be supplied in low height version, with a lid.
17mm finished thickness panels.
Available for toilet pans, urinals, wash-hand basins or simply wall panelling.
Hinged access doors fastened by concealed catches.
Number and heights of horizontal splits can vary.
Full range of veneer finishes available, in matt, silk, relief, unfinished
Core sourced from legal and sustainable sources.
Can be supplied to meet NAUF criteria.
10 year guarantee.



thrislington cubicles

t +44 1244 520 677
e info@thrislingtoncubicles.com
www.thrislingtoncubicles.com

Also available in:

- Glass
- Stainless Steel
- Aluminium
- CGL
- HPL



K32 Specification: Sentry Veneer Access Module

Specification: Fully pre-fabricated unique hinged access panel module up to 3000mm high and a maximum width of 1000mm, manufactured in UK using Aluminium Alloy 6063T6. Overall depth from the rear of the framework to the front face of panel is 82mm. The system offers corrosion resistance from moisture, but is not designed to prevent water penetration. In a shower situation, we would recommend the use of our hung panel system with compact grade laminate panels.

Application: The system is suitable for use inside toilet cubicles with a WC toilet pan, to house urinals or wash hand basins, or as wall lining. It can be used to a back wall or in a back to back layout. Although the system will provide some acoustic dampening, it is not designed for that purpose and in a back to back configuration, we would recommend that an acoustic wall is inserted between the two sets of modules.

The system can be used with urinals and wash hand basins, but we would recommend that sentry compact grade laminate or sentry glass be considered for these applications. Where a wall-hung WC toilet pan is used, the pan needs to have its own weight-bearing support, supplied by others.

Framework: Full aluminium frame using Aluminium Alloy 6063T6, factory assembled using extruded vertical posts and horizontal cross rails, manufactured to bespoke width and height and supported by 12mm diameter zinc-plated mild steel adjustable feet. Frame locates into floor and ceiling channel and is braced to the back wall with aluminium angle, to a specified distance (standard is 300mm to the face of the panels). This framework fully supports the module and no other elements are required to enable the fitting of the system.

Access Panels: 17mm finished thickness consisting of a 15mm moisture resistant chipboard/MDF core, sourced from sustainable forests. Panels are edged first, before being faced with wood veneer, with balancing backing laminate. The standard configuration allows for 3 panels per module, although this can be varied to suit a particular application. Cut-outs for the sanitary ware are undertaken on site, to allow for flexibility/tolerance. Additional cut-outs for other accessories are possible.

Infill Panels: The infills form an integral part of the framework, consisting of vertical infills, a head infill and skirting, creating required shadow gaps/clearances to the vertical edge of the panels and at the floor and ceiling. 17mm finished thickness consisting of 15mm moisture resistant MDF core, sourced from sustainable forests, and faced with wood veneer with balancing backing laminate. Alternatively, WBP plywood can be supplied as skirting to accept finishes by others, such as tiling/vinyl. When fitted prior to the finished ceiling, the head infill can sit above the level of the ceiling, with the ceiling then subsequently fitted to the face of the head infill. Alternatively, if the ceiling is fitted first, the head infill can be scribed to the underside of the ceiling.

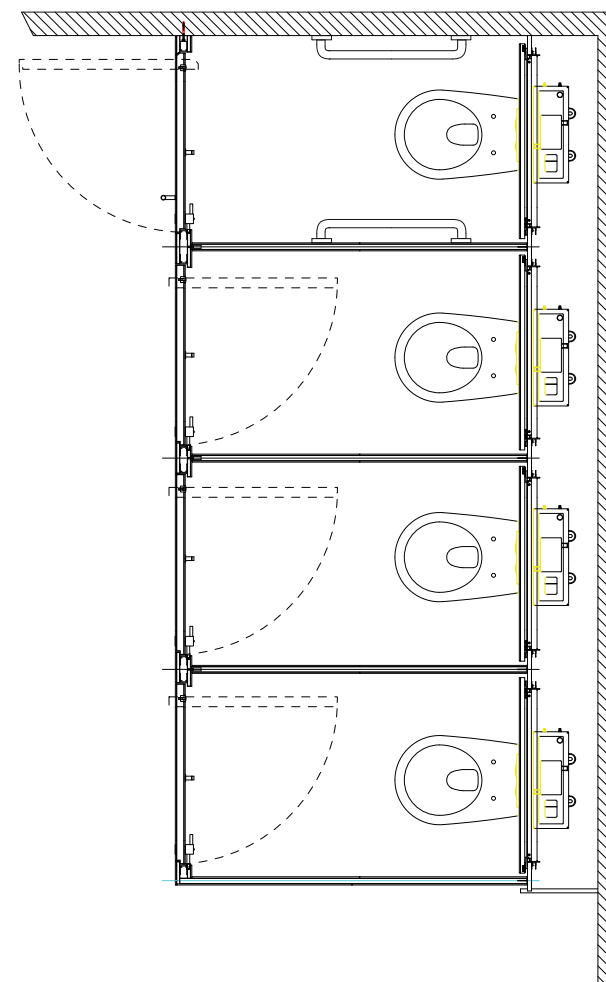
The system has standard shadow gaps of 16mm to the centre and 25mm to side walls. These can be reduced, to suit a particular requirement, by using alternative hardware.

Fittings: Access panels are factory fitted to framework, using adjustable zinc alloy die cast hinges and fastened using zinc alloy die cast locating catches. Panel accessed using supplied injection moulded key.

Finishes:

Panels: 1mm wood veneer from our standard range.

Infills: 1mm wood veneer from our standard range.



sentry stainless steel product summary



Features:

Full aluminium framework.
Factory prefabricated access panel system.
Up to 3000mm high.
Can be supplied in low height version, with a lid.
17mm finished thickness panels.
Available for toilet pans, urinals, wash-hand basins or simply wall panelling.
Hinged access doors fastened by concealed catches.
Number and heights of horizontal splits can vary.
Core sourced from legal and sustainable sources.
Can be supplied to meet NAUF criteria.
10 year guarantee.



thrislington cubicles

t +44 1244 520 677
e info@thrislingtoncubicles.com
www.thrislingtoncubicles.com

Also available in:

- Glass
- Wood Veneer
- Aluminium
- CGL
- HPL



K32 Specification: Sentry Stainless Steel Access Module

Specification: Fully pre-fabricated unique hinged access panel module up to 3000mm high and a maximum width of 1000mm, manufactured in UK using Aluminium Alloy 6063T6. Overall depth from the rear of the framework to the front face of panel is 82mm. The system offers corrosion resistance from moisture, but is not designed to prevent water penetration. In a shower situation, we would recommend the use of our hung panel system with compact grade laminate panels.

Application: The system is suitable for use inside toilet cubicles with a W/C toilet pan, or as wall lining and can be used to a back wall or in a back to back layout. Although the system will provide some acoustic dampening, it is not designed for that purpose and in a back to back configuration, we would recommend that an acoustic wall is inserted between the two sets of modules.

The system can be used with urinals and wash hand basins, but we would recommend that sentry compact grade laminate or sentry glass be considered for these applications. Where a wall-hung W/C toilet pan is used, the pan needs to have its own weight-bearing support, supplied by others.

Framework: Full aluminium frame using Aluminium Alloy 6063T6, factory assembled using extruded vertical posts and horizontal cross rails, manufactured to bespoke width and height and supported by 12mm diameter zinc-plated mild steel adjustable feet. Frame locates into floor and ceiling channel and is braced to the back wall with aluminium angle, to a specified distance (standard is 300mm to the face of the panels). This framework fully supports the module and no other elements are required to enable the fitting of the system.

Access Panels: 17mm finished thickness consisting of a 15mm moisture resistant chipboard/MDF core, sourced from sustainable forests. Panels are initially faced with backing laminate, before being edged, top and bottom, in a matching high pressure laminate. Subsequently, they are faced with stainless steel sheet, folded around vertical edges. The standard configuration allows for 3 panels per module, although this can be varied to suit a particular application. Cut-outs for the sanitary ware are undertaken on site, to allow for flexibility/tolerance. Additional cut-outs for other accessories are possible.

Infill Panels: The infills form an integral part of the framework, consisting of vertical infills, a head infill and skirting, creating required shadow gaps/clearances to the vertical edge of the panels and at the floor and ceiling. 17mm finished thickness consisting of 15mm moisture resistant MDF core, sourced from sustainable forests, and faced with matching high pressure laminate with balancing backing laminate. Alternatively, WBP plywood can be supplied as skirting to accept finishes by others, such as tiling/vinyl. When fitted prior to the finished ceiling, the head infill can sit above the level of the ceiling, with the ceiling then subsequently fitted to the face of the head infill. Alternatively, if the ceiling is fitted first, the head infill can be scribed to the underside of the ceiling.

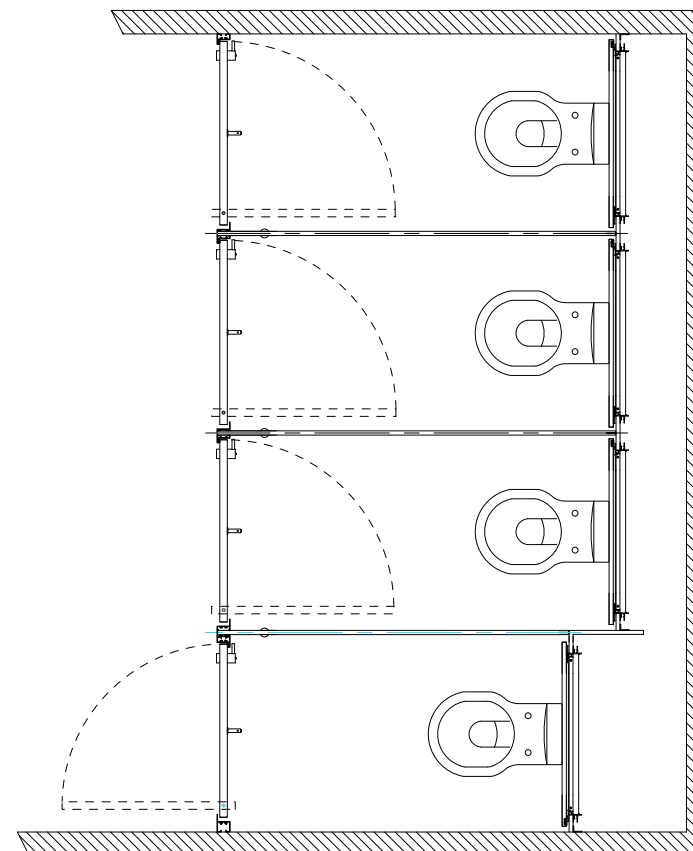
The system has standard shadow gaps of 16mm to the centre and 25mm to side walls. These can be reduced, to suit a particular requirement, by using alternative hardware.

Fittings: Access panels are factory fitted to framework, using adjustable zinc alloy die cast hinges and fastened using zinc alloy die cast locating catches. Panel accessed using supplied injection moulded key.

Finishes:

Panels: 1mm brushed stainless steel sheet.

Infills: 0.8mm matching high pressure laminate.



sentry aluminium product summary



Features:

Full aluminium framework.
Factory prefabricated access panel system.
Up to 3000mm high.
Can be supplied in low height version, with a lid.
17mm finished thickness panels.
Available for toilet pans, urinals, wash-hand basins or simply wall panelling.
Hinged access doors fastened by concealed catches.
Number and heights of horizontal splits can vary.
Core sourced from legal and sustainable sources.
Can be supplied to meet NAUF criteria.
10 year guarantee.



thrislington cubicles

t +44 1244 520 677
e info@thrislingtoncubicles.com
www.thrislingtoncubicles.com

Also available in:

- Glass
- Wood Veneer
- Stainless Steel
- CGL
- HPL



K32 Specification: Sentry Aluminium Access Module

Specification: Fully pre-fabricated unique hinged access panel module up to 3000mm high and a maximum width of 1000mm, manufactured in UK using Aluminium Alloy 6063T6. Overall depth from the rear of the framework to the front face of panel is 82mm. The system offers corrosion resistance from moisture, but is not designed to prevent water penetration. In a shower situation, we would recommend the use of our hung panel system with compact grade laminate panels.

Application: The system is suitable for use inside toilet cubicles with a WC toilet pan, or as wall lining and can be used to a back wall or in a back to back layout. Although the system will provide some acoustic dampening, it is not designed for that purpose and in a back to back configuration, we would recommend that an acoustic wall is inserted between the two sets of modules.

Can be used with urinals and wash hand basins, but we would recommend that sentry compact grade laminate or sentry glass be considered for these applications. Where a wall-hung WC toilet pan is used, the pan needs to have its own weight-bearing support, supplied by others.

Framework: Full aluminium frame using Aluminium Alloy 6063T6, factory assembled using extruded vertical posts and horizontal cross rails, manufactured to bespoke width and height and supported by 12mm diameter zinc-plated mild steel adjustable feet. Frame locates into floor and ceiling channel and is braced to the back wall with aluminium angle, to a specified distance (standard is 300mm to the face of the panels). This framework fully supports the module and no other elements are required to enable the fitting of the system.

Access Panels: 17mm finished thickness consisting of a 15mm moisture resistant chipboard/MDF core, sourced from sustainable forests. Panels are edged first in a matching high pressure laminate with sheet aluminium bonded to both faces. The standard configuration allows for 3 panels per module, although this can be varied to suit a particular application. Cut-outs for the sanitary ware are undertaken on site, to allow for flexibility/tolerance. Additional cut-outs for other accessories are possible.

Infill Panels: The infills form an integral part of the framework, consisting of vertical infills, a head infill and skirting, creating required shadow gaps/clearances to the vertical edge of the panels and at the floor and ceiling. 17mm finished thickness consisting of 15mm moisture resistant MDF core, sourced from sustainable forests, and faced with matching high pressure laminate with balancing backing laminate. Alternatively, WBP plywood can be supplied as skirting to accept finishes by others, such as tiling/vinyl. When fitted prior to the finished ceiling, the head infill can sit above the level of the ceiling, with the ceiling then subsequently fitted to the face of the head infill. Alternatively, if the ceiling is fitted first, the head infill can be scribed to the underside of the ceiling.

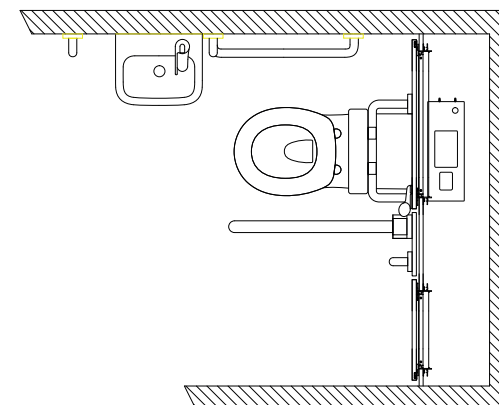
The system has standard shadow gaps of 16mm to the centre and 25mm to side walls. These can be reduced, to suit a particular requirement, by using alternative hardware.

Fittings: Access panels are factory fitted to framework, using adjustable zinc alloy die cast hinges and fastened using zinc alloy die cast locating catches. Panel accessed using supplied injection moulded key.

Finishes:

Panels: 1mm satin anodised aluminium sheet.

Infills: 0.8mm matching high pressure laminate.



sentry compact grade product summary



Features:

Full aluminium framework.
Factory prefabricated access panel system.
Up to 3000mm high.
Can be supplied in low height version, with a lid.
12mm finished thickness panels.
Available for toilet pans, urinals, wash-hand basins or simply wall panelling.
Hinged access doors fastened by concealed catches.
Number and heights of horizontal splits can vary.
Wide range of compact grade laminates available, from alternative manufacturers.
Core sourced from legal and sustainable sources.
Anti-tamper & secure options
10 year guarantee.



thrislington cubicles

t +44 1244 520 677
e info@thrislingtoncubicles.com
www.thrislingtoncubicles.com

Also available in:

- Glass
- Wood Veneer
- Stainless Steel
- Aluminium
- HPL



K32 Specification: Sentry Compact Grade Access Module

Specification: Fully pre-fabricated unique hinged access panel module up to 3000mm high and a maximum width of 1000mm, manufactured in UK using Aluminium Alloy 6063T6. Overall depth from the rear of the framework to front face of panel is 77mm. The system offers corrosion resistance to moisture, but is not designed to prevent water penetration. In a shower situation, we would recommend the use of out hung panel system with compact grade laminate panels.

Application: The system is suitable for use inside toilet cubicles with a WC toilet pan, to house urinals or wash hand basins, or as wall lining. It can be used to a back wall or in a back to back layout. Although the system will provide some acoustic dampening, it is not designed for that purpose and in a back to back configuration, we would recommend that an acoustic wall is inserted between the two sets of modules. Where a wall-hung WC toilet pan is used, the sanitary ware needs to have its own weight-bearing support, supplied by others.

Framework: Full aluminium frame using Aluminium Alloy 6063T6, factory assembled using extruded vertical posts and horizontal cross rails, manufactured to bespoke width and height and supported by 12mm diameter zinc-plated mild steel adjustable feet. Frame locates into floor and ceiling channel and is braced to the back wall with aluminium angle, to a specified distance (standard is 300mm to face of panels). This framework fully supports the module and no other elements are required to enable the fitting of the system.

Access Panels: 12mm compact grade laminate, polished to all edges. The standard configuration allows for 3 no panels per module, although this can be varied to suit a particular application. Cut-outs for the sanitary ware are undertaken on site, to allow for flexibility/tolerance. Additional cut-outs for other accessories are possible.

Infill Panels: The infills form an integral part of the framework, consisting of vertical infills, a head infill and skirting, creating required shadow gaps/clearances to the vertical edge of the panels and at the floor and ceiling. Standard infills are 17mm finished thickness consisting of 15mm moisture resistant MDF core, sourced from sustainable forests, and faced with high pressure laminate with balancing backing laminate. In areas of high moisture content, infills can be 12mm compact grade laminate. WBP plywood can be supplied as skirting to accept finishes by others, such as tiling/vinyl. When fitted prior to the finished ceiling, the head infill can sit above the level of the ceiling, with the ceiling then subsequently fitted to the face of the head infill. Alternatively, if the ceiling is fitted first, the head infill can be scribed to the underside of the ceiling.

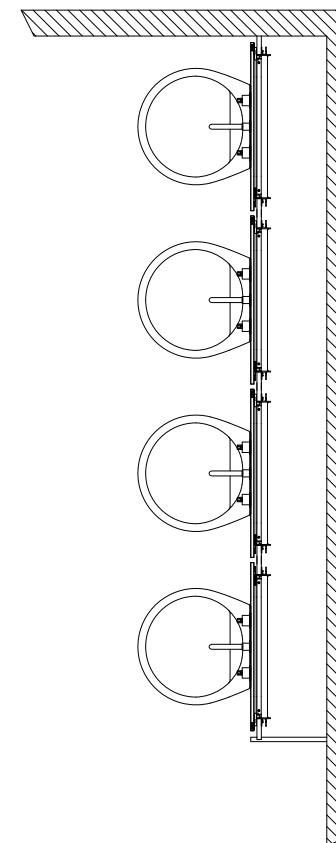
The system has standard shadow gaps of 16mm to the centre and 25mm to side walls. These can be reduced, to suit a particular requirement, by using alternative hardware.

Fittings: Access panels factory fitted to framework, using adjustable zinc alloy die cast hinges and fastened using zinc alloy die cast locating catches. Panel accessed using supplied injection moulded key.

Finishes:

Panels: 12mm compact grade laminate from our standard ranges, which include various leading manufacturers.

Infills: 0.8mm high pressure laminate or 12mm compact grade laminate from our standard ranges, which include various leading manufacturers.



sentry laminate product summary



Features:

Full aluminium framework.
Factory prefabricated access panel system.
Up to 3000mm high.
Can be supplied in low height version, with a lid.
17mm finished thickness panels.
Available for toilet pans, urinals, wash-hand basins or simply wall panelling.
Hinged access doors fastened by concealed catches.
Number and heights of horizontal splits can vary.
Wide range of laminates available, from alternative manufacturers.
Core sourced from legal and sustainable sources.
Can be supplied to meet NAUF criteria.
Anti-tamper & secure options
10 year guarantee.



thrislington cubicles

t +44 1244 520 677
e info@thrislingtoncubicles.com
www.thrislingtoncubicles.com

Also available in:

- Glass
- Wood Veneer
- Stainless Steel
- Aluminium
- CGL



K32 Specification: Sentry Laminate Access Module

Specification: Fully pre-fabricated unique hinged access panel module up to 3000mm high, manufactured in UK using Aluminium Alloy 6063T6. Overall depth from the rear of the framework to the front face of panel is 82mm. The system offers corrosion resistance from moisture, but is not designed to prevent water penetration. In a shower situation, we would recommend the use of our hung panel system with compact grade laminate panels.

Application: The system is suitable for use inside toilet cubicles with a WC toilet pan, or as wall lining and can be used to a back wall or in a back to back layout. Although the system will provide some acoustic dampening, it is not designed for that purpose and in a back to back configuration, we would recommend that an acoustic wall is inserted between the two sets of modules.

Where a wall-hung WC toilet pan is used, the pan needs to have its own weight-bearing support, supplied by others.

Framework: Full aluminium frame using Aluminium Alloy 6063T6, factory assembled using extruded vertical posts and horizontal cross rails, manufactured to bespoke width and height and supported by 12mm diameter zinc-plated mild steel adjustable feet. Frame locates into floor and ceiling channel and is braced to the back wall with aluminium angle, to a specified distance (standard is 300mm to the face of the panels). This framework fully supports the module and no other framework needs to be in place to enable the fitting of the system.

Access Panels: 17mm finished thickness consisting of a 15mm moisture resistant chipboard/MDF core, sourced from sustainable forests. Where vertical edges are square, the panels are edged first and then faced with high pressure laminate, with balancing backing laminate. Alternatively, vertical edges can be postformed. The standard configuration allows for 3 panels per module, although this can be varied to suit a particular application. Cut-outs for the sanitary ware are undertaken on site, to allow for flexibility/tolerance. Additional cut-outs for other accessories are possible.

Infill Panels: The infills form an integral part of the framework, consisting of vertical infills, a head infill and skirting, creating required shadow gaps/clearances to the vertical edge of the panels and at the floor and ceiling. 17mm finished thickness consisting of 15mm moisture resistant MDF core, sourced from sustainable forests, and faced with high pressure laminate with balancing backing laminate. Alternatively, WBP plywood can be supplied as skirting to accept finishes by others, such as tiling/vinyl. When fitted prior to the finished ceiling, the head infill can sit above the level of the ceiling, with the ceiling then subsequently fitted to the face of the head infill. Alternatively, if the ceiling is fitted first, then the head infill can be scribed to the underside of the ceiling.

The system has standard shadow gaps of 16mm to the centre and 25mm to side walls. These can be reduced, to suit a particular requirement, by using alternative hardware.

Fittings: Access panels are factory fitted to framework, using adjustable zinc alloy die cast hinges and fastened using zinc alloy die cast locating catches. Panel accessed using supplied injection moulded key.

Finishes:

Panels: 0.8mm high pressure laminate from our standard ranges, which include various leading manufacturers.

Infills: 0.8mm high pressure laminate from our standard ranges, which include various leading manufacturers.

